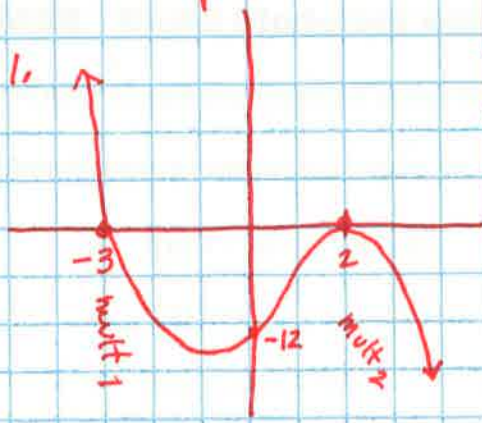
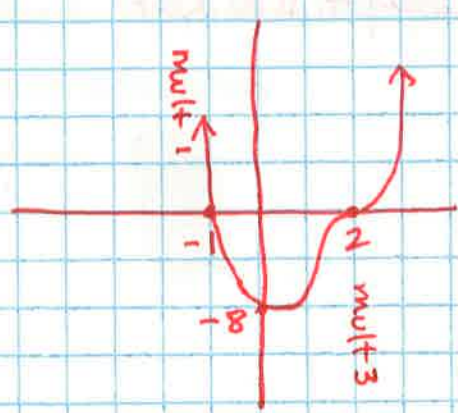


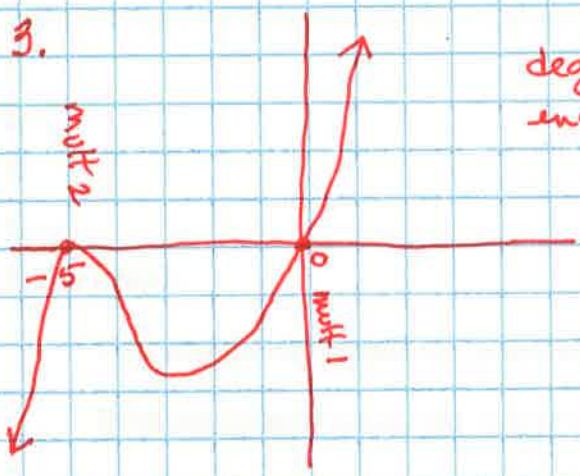
U2 Day 4 HW KEY



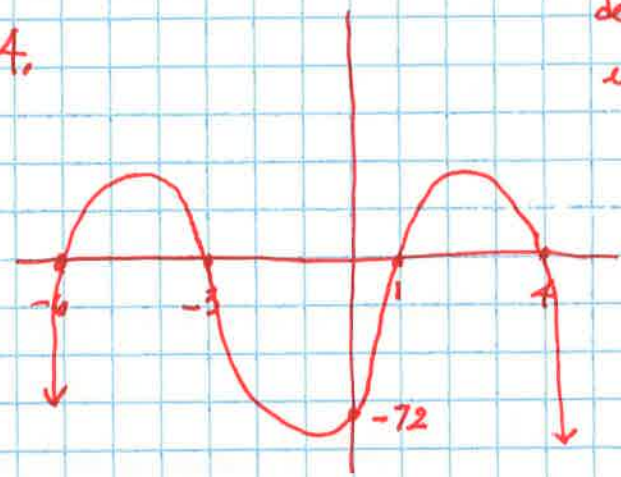
Degree 3
End Beh \curvearrowright 2.



Degree 4
end beh \curvearrowright



Degree 3
end beh \curvearrowright 4.



Degree 4
end beh \curvearrowright

all mult: 1

End Behavior:

1. $x \rightarrow \infty \quad y \rightarrow -\infty$
 $x \rightarrow -\infty \quad y \rightarrow \infty$

3. $x \rightarrow \infty \quad y \rightarrow \infty$
 $x \rightarrow -\infty \quad y \rightarrow -\infty$

2. $x \rightarrow \infty \quad y \rightarrow \infty$
 $x \rightarrow -\infty \quad y \rightarrow \infty$

4. $x \rightarrow \infty \quad y \rightarrow -\infty$
 $x \rightarrow -\infty \quad y \rightarrow -\infty$

In the graph:

- ... go straight through the x-axis
- ... touch and turn
- ... the more flattening at the x-int.

Make your own sketches:

Answers may vary.
 check with your 