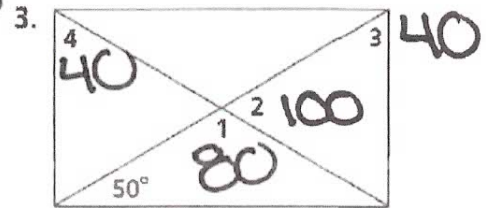
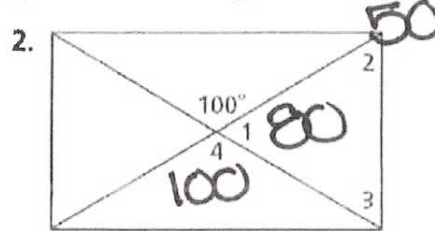
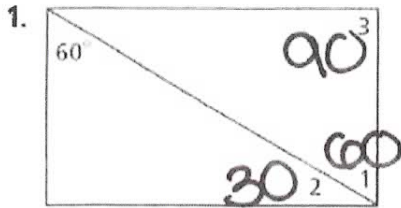
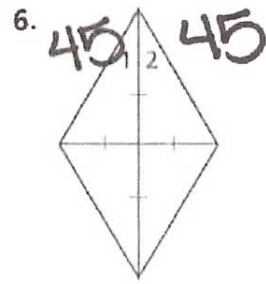
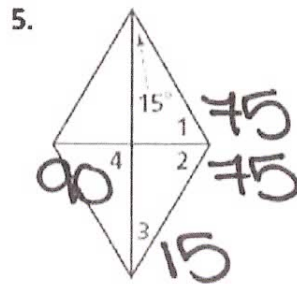
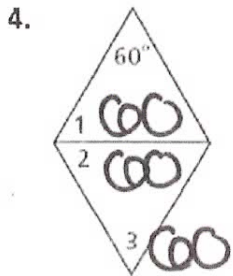


Find the measures of the numbered angles in each rectangle.



Find the measures of the numbered angles in each rhombus.



Use rectangle  $ABCD$  and the given information to solve each problem.

7. If  $AC = 4x - 60$  and  $BD = 30 - x$ , find  $BD$ .

12

8. If  $AC = 4x - 60$  and  $AE = x + 5$ , find  $EC$ .

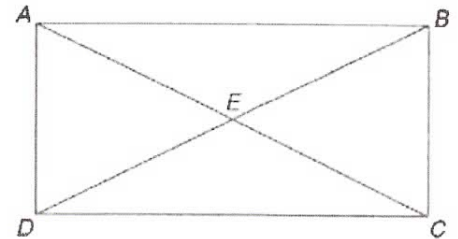
40

9. If  $m\angle BAC = 4x + 5$  and  $m\angle CAD = 5x - 14$ , find  $m\angle CAD$ .

41

10. If  $AE = 2x + 3$  and  $BE = 12 - x$ , find  $BD$ .

18

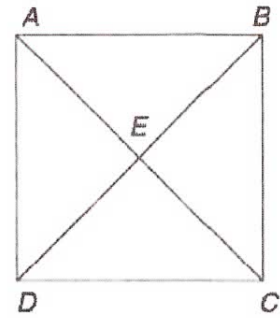


Use square  $ABCD$  and the given information to find each value.

11. If  $m\angle AEB = 3x$ , find  $x$ . 30

12. If  $m\angle BAC = 9x$ , find  $x$ . 5

13. If  $AB = 2x + 4$  and  $CD = 3x - 5$ , find  $BC$ .  
22



Use rhombus  $ABCD$  and the given information to find each measure.

14.  $m\angle BCE$  31

15.  $m\angle BEC$  90

16.  $AC$  24 cm

17.  $m\angle ABD$  59

18.  $AD$  14 cm

